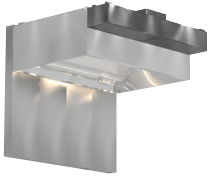
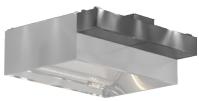


Non-Grease Hoods – Type II

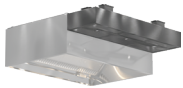
Heat and Fume Hoods Options and Accessories



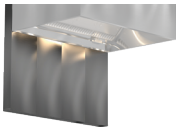
External Supply Plenum - Greenheck offers several arrangements to supply air back into the kitchen space uniformly. External plenums positioned at or near the exhaust hoods are the best alternative to integral supply plenums. Unlike integral supply plenums, external supply plenums do not sacrifice valuable exhaust hood containment area. They can also be retrofitted to almost any hood and are generally less expensive than integral supply plenums. Greenheck offers the following external supply choices:



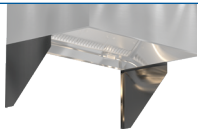
Air Curtain (Vertical) Supply Plenum (ASP) - Air curtain supply plenums are typically used in non-tempered or heat-only applications, depending upon climate (can be used as an efficient method for spot-cooling).



Split Air Curtain Supply Plenum (Split ASP) - The optional split air curtain supply plenum (Split ASP) is an attractive method to provide make-up air and conditioned air through one plenum. Non-tempered make-up air is drawn into the hood, while the cooled conditioned air moves outward to provide spot cooling to the kitchen space.



Back Supply Plenum (BSP) - Back supply plenums are typically used in non-tempered or marginally tempered applications, and these plenums are also ideal for heating air during the colder months since hot air will rise from its low discharge position.



End Skirts - End skirts are available in both full and mini configurations and are constructed with either series 300 or 430 stainless steel to match the hood. End skirts can improve the capture of the hood, especially during surges of heavy steam.



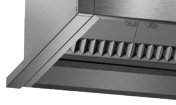
Backsplash Panels/Side Splash Panels - Splash panels provide an aesthetically desirable and easily cleanable stainless-steel surface behind or on adjacent walls near the hood. Constructed of series 300 or 430 stainless steel to match the hood. Also available with 1-inch (25 mm) zero clearance insulation.



Lighting Options - Multiple lighting options are available. Screw-in fixtures for incandescent or CFL lights are standard. For more efficient lighting, recessed round LED lights are available. All fixtures are vapor proof and UL Approved. LED lights save up to 95% in electrical costs when compared to standard incandescent lights.



Ceiling Enclosure - When the top of the hood is mounted lower than the finished ceiling height, enclosure panels can be provided in series 300 or 430 stainless steel to match your hood. These enclosures create an aesthetically pleasing finish.



Airspace/Filler Panels - To assist with clearances to combustible surfaces, stainless steel airspaces can be supplied. These panels can also be used to fill in open spaces and improve aesthetics.

Other options and accessories include:

Electrical Interface for Lights and Fan - Interface can be shipped loose for remote mounting, mounted on the hood face, or in the utility cabinet.

Trim Strips - Stainless steel strips to be used anywhere hood sections meet to improve aesthetics.

Exhaust Collars -

Ship Loose - Shipping exhaust collars loose provides an exhaust collar to be used, but no exhaust cutout in the hood. This enables the contractor to locate and cut the exhaust opening, where desired, when not known ahead of time.

Shape - To accommodate various ductwork, several sizes of rectangular and round collars are available.

For more information regarding Greenheck kitchen ventilation systems and components visit www.greenheck.com or consult your local Greenheck representative.

